



Arbery Road, London, E3

BUTLER  STAG



Unique one bedroom apartment situated on the third floor of a gorgeous school conversion on a tree-lined road in Bow.



- Beautiful One Bedroom Apartment
- Vaulted Ceilings and Period Features
- Mile End Station Nearby
- Unfurnished
- School Conversion
- Recently Refurbished Throughout
- Close to Roman Road and Victoria Park
- Available from 15th August 2025

Recently refurbished throughout and featuring exceedingly high vaulted ceilings and a wealth of character, this wonderful space would make an ideal home for a couple or a single professional.

Featuring a vast open-plan living / dining space with large original windows and open-plan to a beautifully fitted kitchen, the stunningly-appointed bathroom can be found on the same level, with the bedroom upstairs on a mezzanine.

Set off an attractive road in residential Bow, yet just moments from the amenities of the iconic Roman Road, the location provides swift access towards Mile End station in one direction and the ever-popular Victoria Park and village in the other.

Offered unfurnished, this must-see apartment is available from 15th August 2025.

EPC Rating D
Council Tax Band D





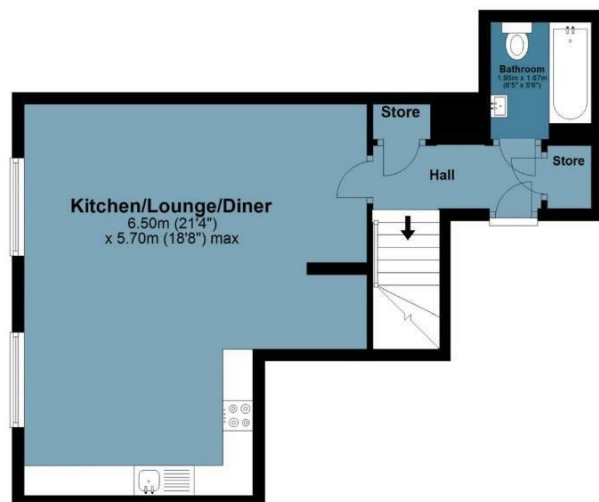
Schoolbell Mews

Approx. Gross Internal Area 60.8 Sq M (654.3 Sq Ft)

BUTLER & STAG

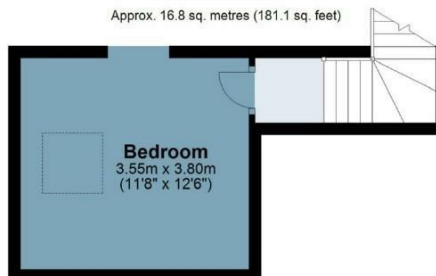
Third Floor

Approx. 44.0 sq. metres (473.2 sq. feet)



Mezzanine

Approx. 16.8 sq. metres (181.1 sq. feet)



Floor plan is for illustrative purposes only and is not to scale. Every attempt has been made to ensure the accuracy of the floor plan shown, however all measurements, fixtures, fittings and data shown are an approximate interpretation for illustrative purposes only.

BUTLER & STAG

☎ 020 8102 1236

🏠 508 Roman Road, Bow, London, E3 5LU

✉ bow@butlerandstag.com

www.butlerandstag.uk

IMPORTANT NOTICE - These particulars have been prepared in good faith and they are not intended to constitute part of an offer or contract. We have not performed a structural survey on this property and the services, appliances and specific fittings have not been tested. All photographs, measurements, floor plans and distances referred to are given as a guide and should not be relied upon.